

# Goyder Pavilion

## Evacuation Procedures



### ON DISCOVERING AN EMERGENCY SITUATION

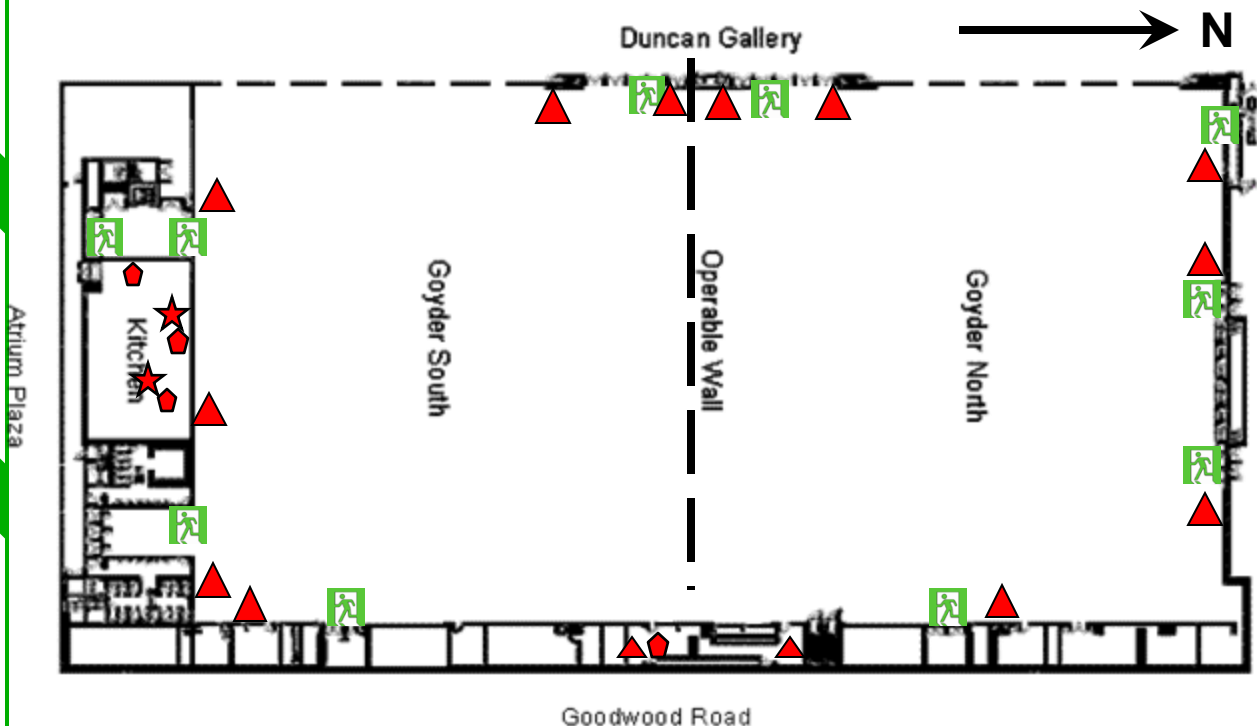
#### ON DISCOVERING AN EMERGENCY SITUATION

1. Alert anyone nearby
2. Evacuate buildings or area - Do not re-enter
3. Evacuate people via nearest safe exit
4. Do not allow people to re-enter buildings or area
5. Contact the Emergency Services - Dial 000
6. Contact the RA&HS Emergency Number - 8210 5219 or after hours 0419 185 312
7. Provide first aid assistance or fight the fire if it is safe to do so

**Keep people clear of emergency vehicle access**

**Emergency Assembly Point - EAP**

is located **at the Ridley Gate.**



#### Fire Equipment Locations

- Water Extinguisher    ● CO2 Extinguisher    ▲ Dry Chemical Extinguisher    ★ Fire Blanket  
★ Wet Chemical    ■ Emergency Exits

#### NOTES