

**EVACUATION DIAGRAM**  
**NT NETBALL**  
235 ABALA ROAD  
DARWIN, 0812 NORTHERN TERRITORY

**EMERGENCY PROCEDURES**



**OPERATE THE NEAREST FIRE ALARM**  
IF APPLICABLE & WARN OTHER  
OCCUPANTS.



**LEAVE THE BUILDING BY THE**  
NEAREST AND SAFEST AVAILABLE  
EXIT & PATH OF EGRESS. DO NOT  
RUN.



**REPORT TO THE FIRE WARDENS**  
IN CHARGE OF THE ASSEMBLY  
POINT AND FOLLOW INSTRUCTIONS



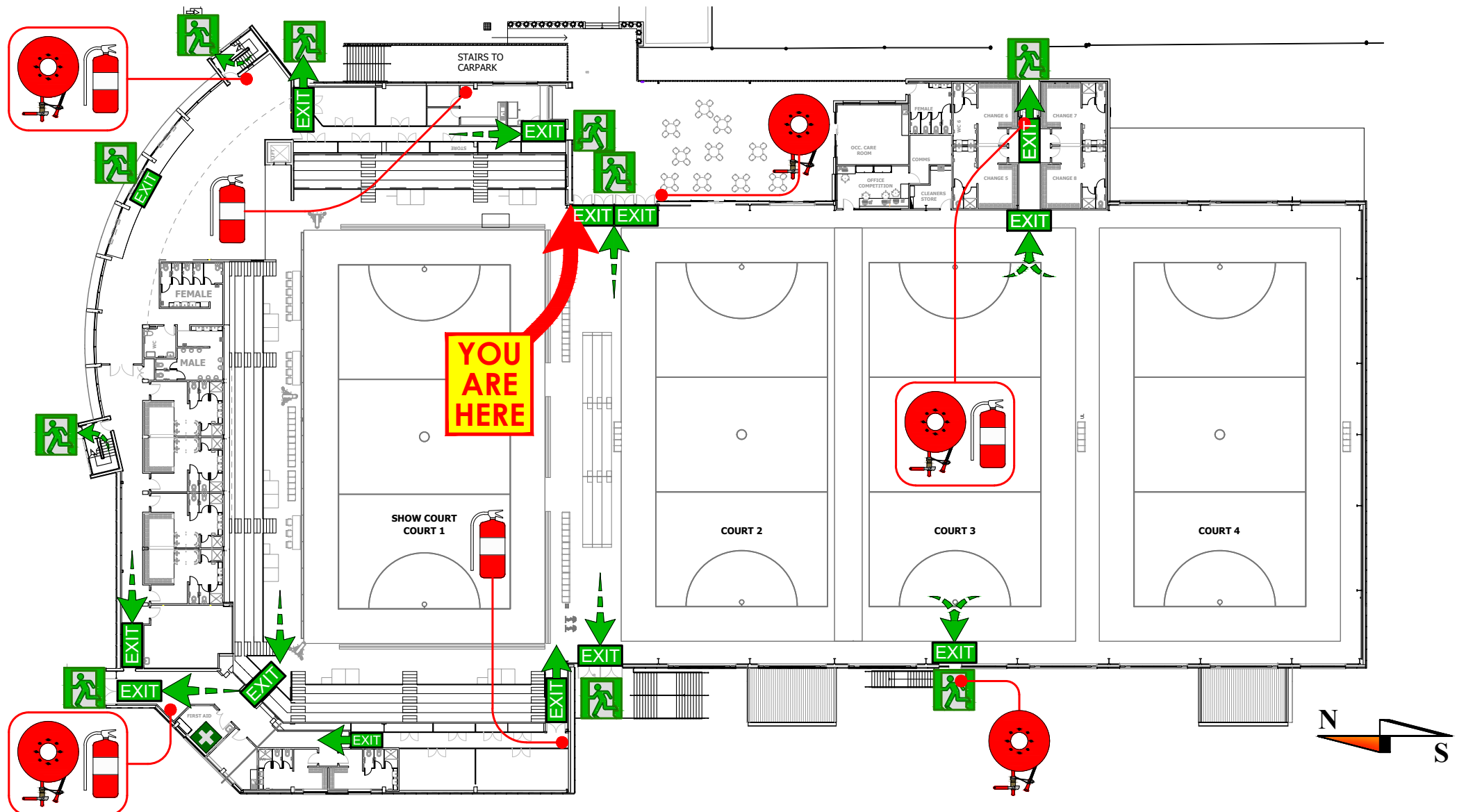
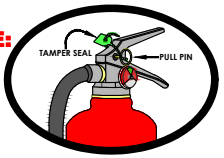
**DO NOT RE-ENTER THE BUILDING**  
UNTIL AUTHORIZED TO DO SO BY  
THE FIRE WARDENS



**FIRE EXTINGUISHER**

**HOW TO USE:**

- IF TRAINED TO DO SO
- PULL THE PIN
- AIM AT THE BASE OF THE FIRE
- SQUEEZE THE TRIGGER
- SWEEP SIDE TO SIDE

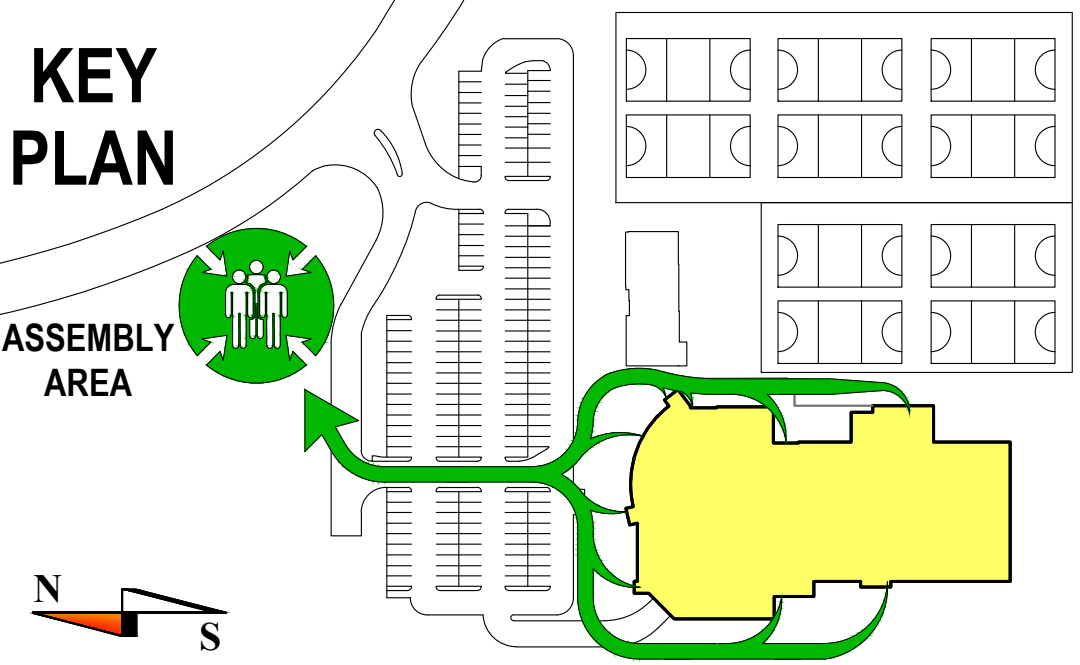


**YOU ARE HERE**

**GROUND FLOOR**

**KEY PLAN**

**ASSEMBLY AREA**



DATE OF ISSUE: 04-12-18



29/116 Coonawarra Road  
Winnellie NT 0820  
Box 3499 Darwin NT 0810  
P: 08 8947 2437

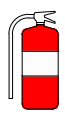
**LEGEND**



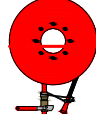
EXIT SIGN



DESIGNATED  
EXIT



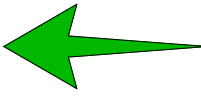
DRY CHEMICAL POWDER  
FIRE EXTINGUISHER



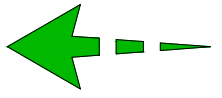
FIRE  
HOSE REEL



FIRST AID  
KIT



EGRESS PATH  
EXTERNAL



EGRESS PATH  
INTERNAL

**EVACUATION DIAGRAM**  
**NT NETBALL**  
235 ABALA ROAD  
DARWIN, 0812 NORTHERN TERRITORY

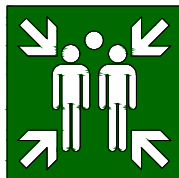
**EMERGENCY PROCEDURES**



**OPERATE THE NEAREST FIRE ALARM**  
IF APPLICABLE & WARN OTHER  
OCCUPANTS.



**LEAVE THE BUILDING BY THE**  
NEAREST AND SAFEST AVAILABLE  
EXIT & PATH OF EGRESS. DO NOT  
RUN.



**REPORT TO THE FIRE WARDENS**  
IN CHARGE OF THE ASSEMBLY  
POINT AND FOLLOW INSTRUCTIONS



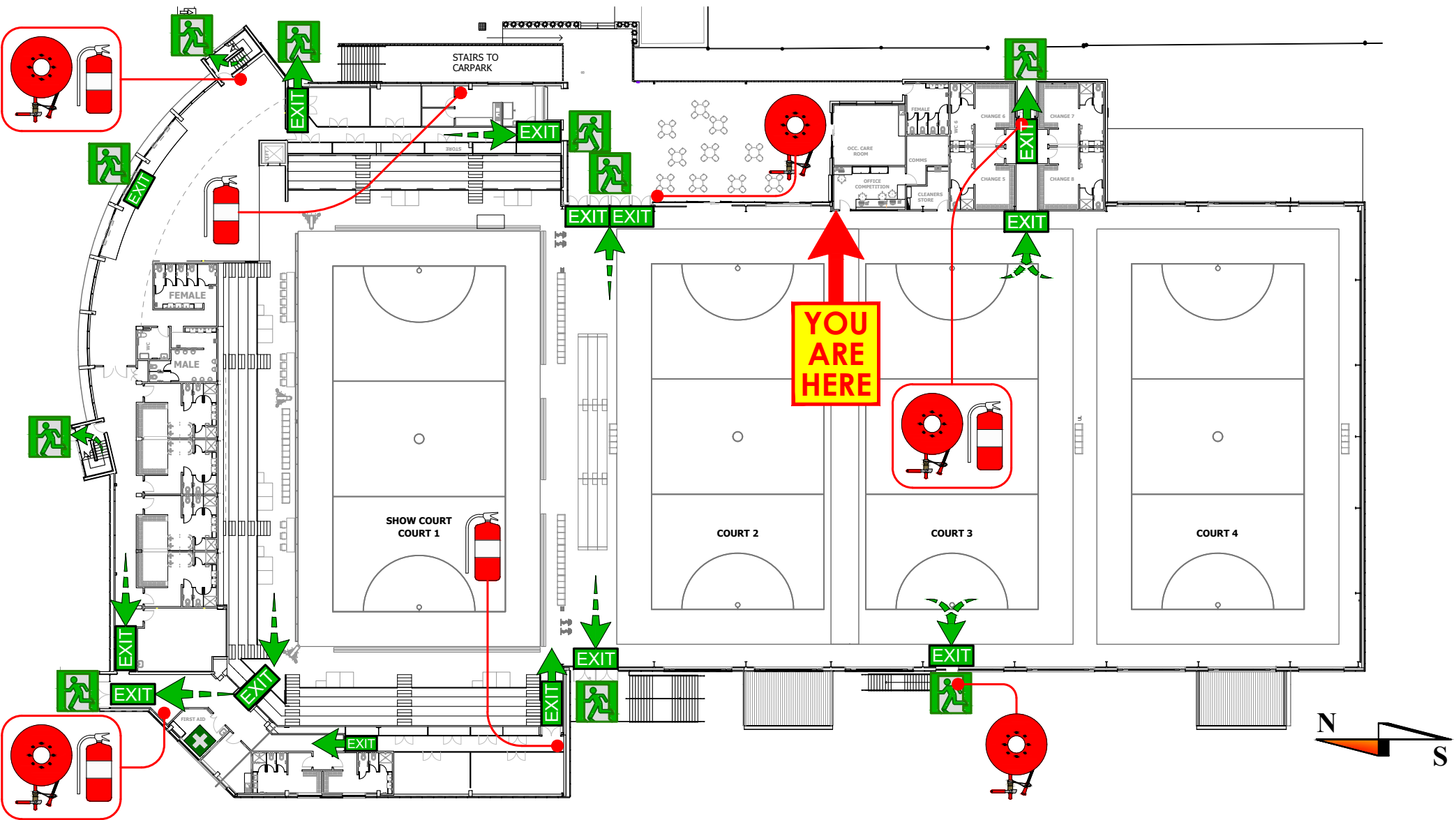
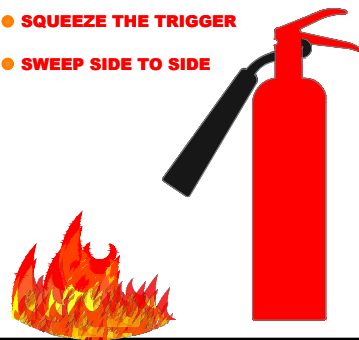
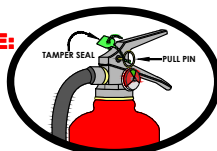
**DO NOT RE-ENTER THE BUILDING**  
UNTIL AUTHORIZED TO DO SO BY  
THE FIRE WARDENS



**FIRE EXTINGUISHER**

**HOW TO USE:**

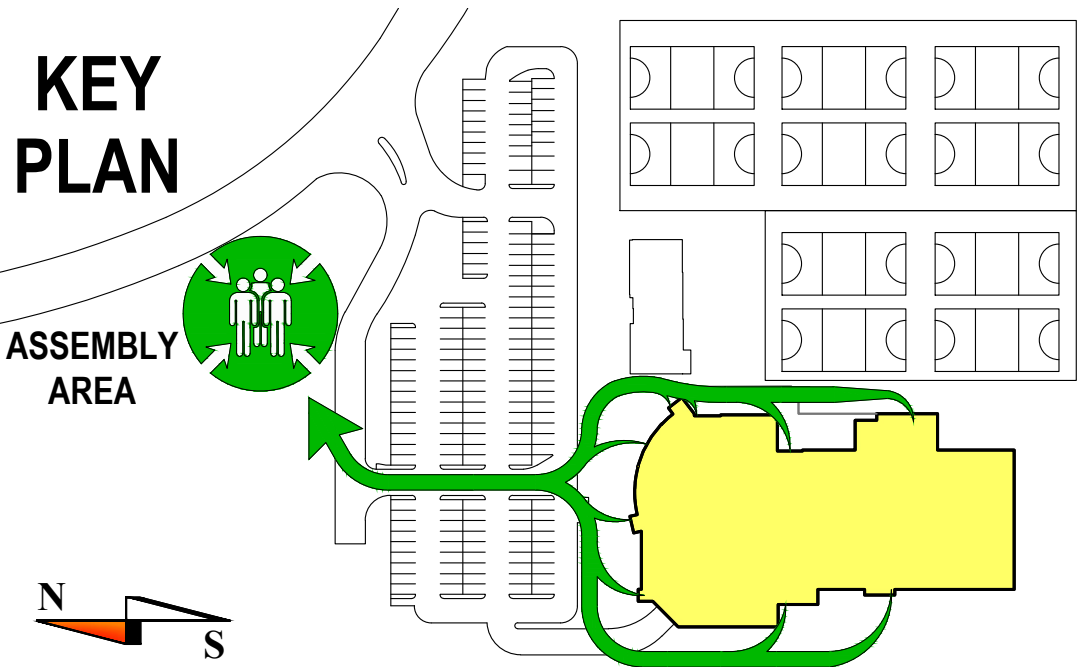
- IF TRAINED TO DO SO
- PULL THE PIN
- AIM AT THE BASE OF THE FIRE
- SQUEEZE THE TRIGGER
- SWEEP SIDE TO SIDE



**GROUND FLOOR**

**KEY PLAN**

**ASSEMBLY AREA**



DATE OF ISSUE: 04-12-18

29/116 Coonawarra Road  
Winnellie NT 0820  
Box 3499 Darwin NT 0810  
P: 08 8947 2437

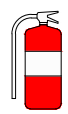
**LEGEND**



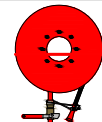
EXIT SIGN



DESIGNATED  
EXIT



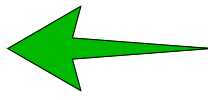
DRY CHEMICAL POWDER  
FIRE EXTINGUISHER



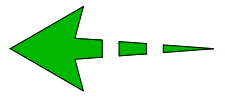
FIRE  
HOSE REEL



FIRST AID  
KIT



EGRESS PATH  
EXTERNAL



EGRESS PATH  
INTERNAL



# EVACUATION DIAGRAM

NT NETBALL  
235 ABALA ROAD  
DARWIN, 0812 NORTHERN TERRITORY

## EMERGENCY PROCEDURES



OPERATE THE NEAREST FIRE ALARM  
IF APPLICABLE & WARN OTHER  
OCCUPANTS.



LEAVE THE BUILDING BY THE  
NEAREST AND SAFEST AVAILABLE  
EXIT & PATH OF EGRESS. DO NOT  
RUN.



REPORT TO THE FIRE WARDENS  
IN CHARGE OF THE ASSEMBLY  
POINT AND FOLLOW INSTRUCTIONS



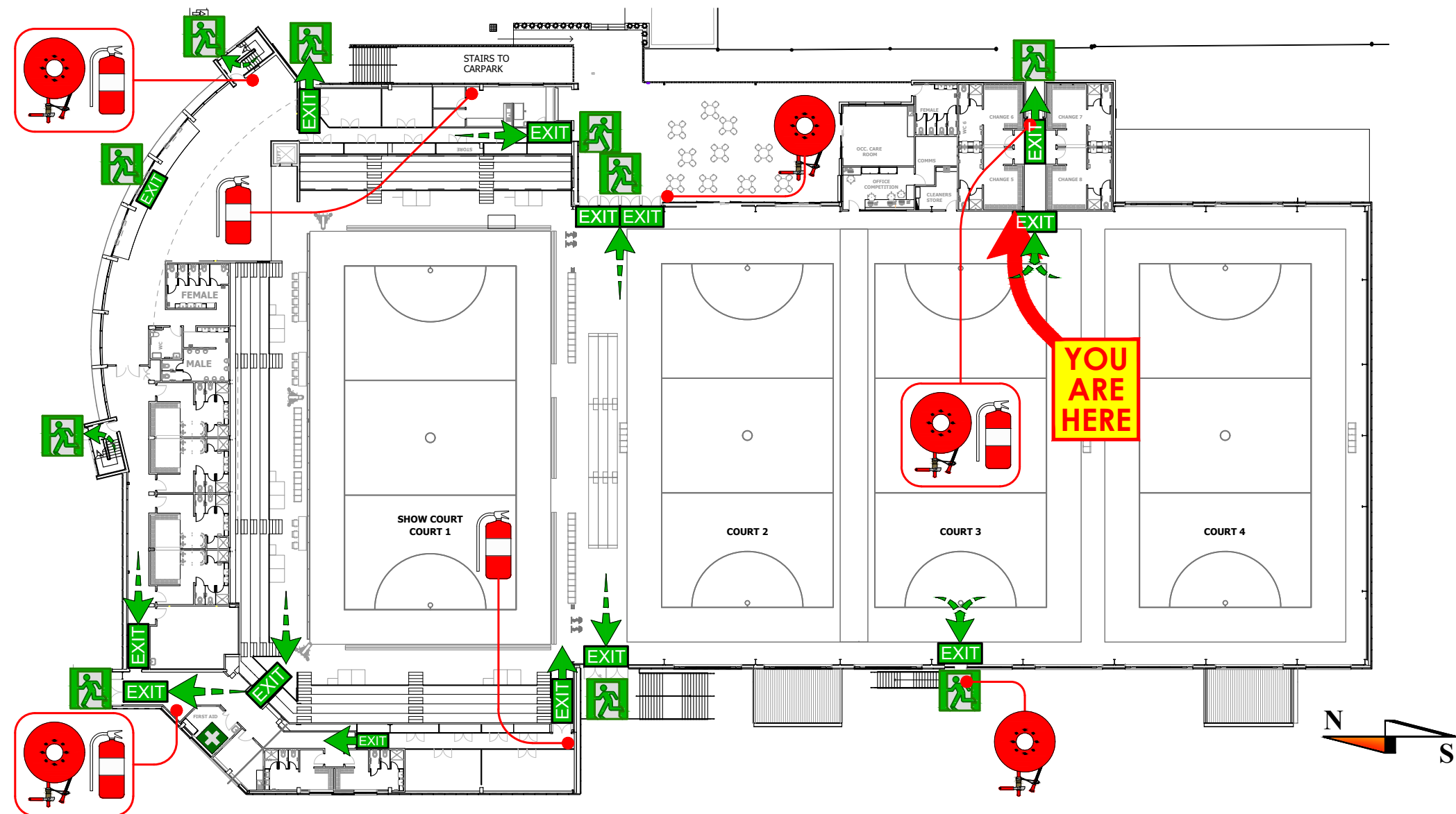
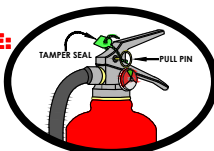
DO NOT RE-ENTER THE BUILDING  
UNTIL AUTHORIZED TO DO SO BY  
THE FIRE WARDENS



## FIRE EXTINGUISHER

### HOW TO USE:

- IF TRAINED TO DO SO
- PULL THE PIN
- AIM AT THE BASE OF THE FIRE
- SQUEEZE THE TRIGGER
- SWEEP SIDE TO SIDE



## GROUND FLOOR

## KEY PLAN

ASSEMBLY  
AREA



DATE OF ISSUE: 04-12-18



29/116 Coonawarra Road  
Winnellie NT 0820  
Box 3499 Darwin NT 0810  
P: 08 8947 2437

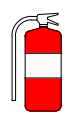
## LEGEND



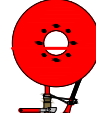
EXIT SIGN



DESIGNATED  
EXIT



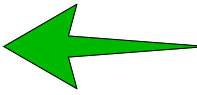
DRY CHEMICAL POWDER  
FIRE EXTINGUISHER



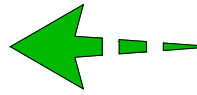
FIRE  
HOSE REEL



FIRST AID  
KIT



EGRESS PATH  
EXTERNAL



EGRESS PATH  
INTERNAL



# EVACUATION DIAGRAM

## NT NETBALL

235 ABALA ROAD  
DARWIN, 0812 NORTHERN TERRITORY

### EMERGENCY PROCEDURES



OPERATE THE NEAREST FIRE ALARM  
IF APPLICABLE & WARN OTHER  
OCCUPANTS.



LEAVE THE BUILDING BY THE  
NEAREST AND SAFEST AVAILABLE  
EXIT & PATH OF EGRESS. DO NOT  
RUN.



REPORT TO THE FIRE WARDENS  
IN CHARGE OF THE ASSEMBLY  
POINT AND FOLLOW INSTRUCTIONS



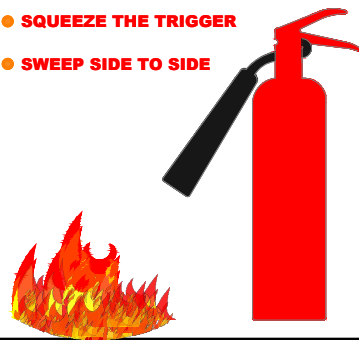
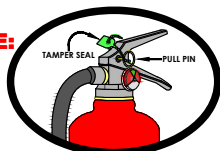
DO NOT RE-ENTER THE BUILDING  
UNTIL AUTHORIZED TO DO SO BY  
THE FIRE WARDENS



### FIRE EXTINGUISHER

#### HOW TO USE:

- IF TRAINED TO DO SO
- PULL THE PIN
- AIM AT THE BASE OF THE FIRE
- SQUEEZE THE TRIGGER
- SWEEP SIDE TO SIDE



DATE OF ISSUE: 04-12-18

29/116 Coonawarra Road  
Winnellie NT 0820  
Box 3499 Darwin NT 0810  
P: 08 8947 2437

### LEGEND



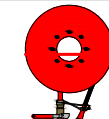
EXIT SIGN



DESIGNATED  
EXIT



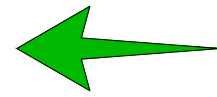
DRY CHEMICAL POWDER  
FIRE EXTINGUISHER



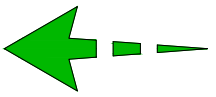
FIRE  
HOSE REEL



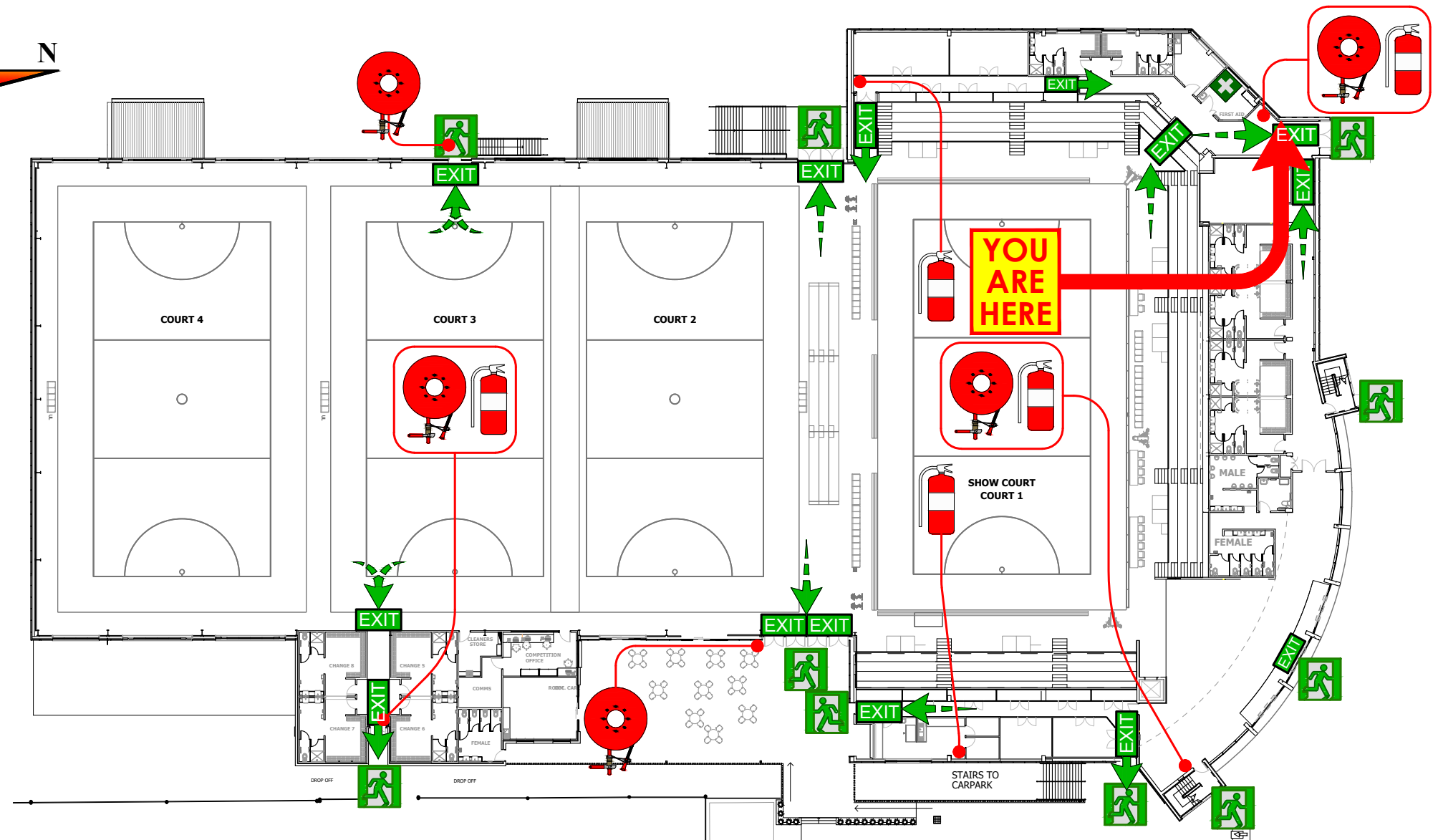
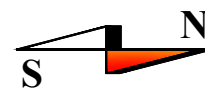
FIRST AID  
KIT



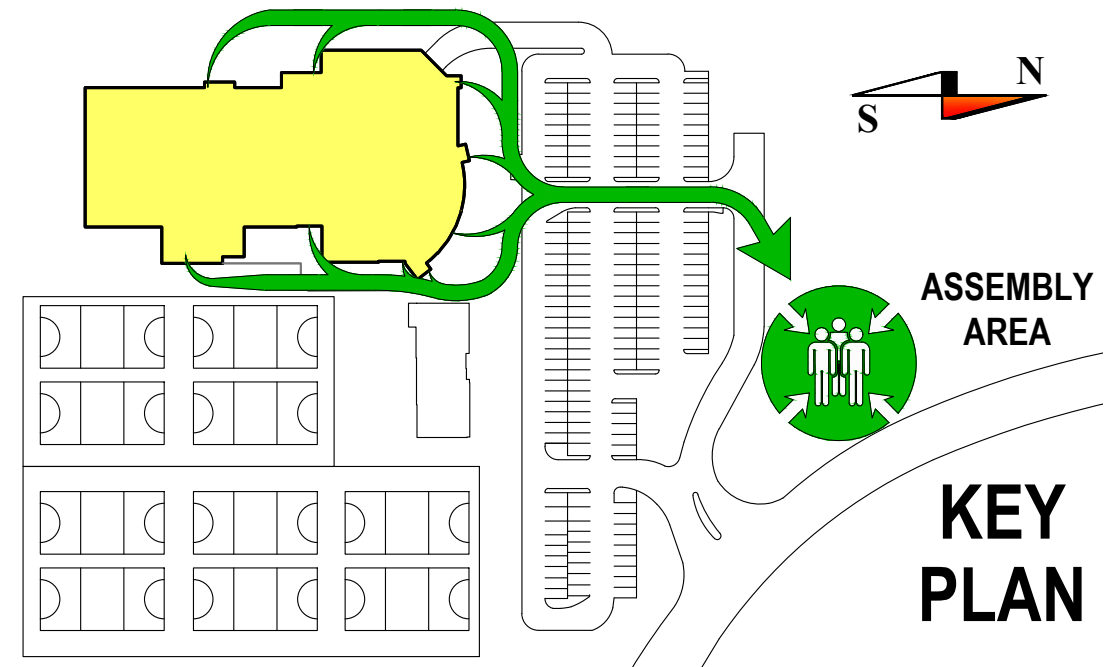
EGRESS PATH  
EXTERNAL



EGRESS PATH  
INTERNAL



GROUND FLOOR





# EVACUATION DIAGRAM

## NT NETBALL

235 ABALA ROAD  
DARWIN, 0812 NORTHERN TERRITORY

### EMERGENCY PROCEDURES



OPERATE THE NEAREST FIRE ALARM  
IF APPLICABLE & WARN OTHER  
OCCUPANTS.



LEAVE THE BUILDING BY THE  
NEAREST AND SAFEST AVAILABLE  
EXIT & PATH OF EGRESS. DO NOT  
RUN.



REPORT TO THE FIRE WARDENS  
IN CHARGE OF THE ASSEMBLY  
POINT AND FOLLOW INSTRUCTIONS



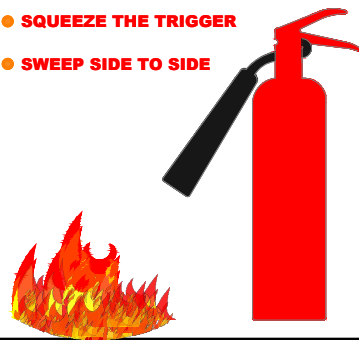
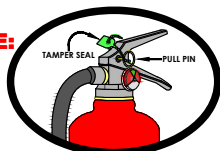
DO NOT RE-ENTER THE BUILDING  
UNTIL AUTHORIZED TO DO SO BY  
THE FIRE WARDENS



### FIRE EXTINGUISHER

#### HOW TO USE:

- IF TRAINED TO DO SO
- PULL THE PIN
- AIM AT THE BASE OF THE FIRE
- SQUEEZE THE TRIGGER
- SWEEP SIDE TO SIDE



DATE OF ISSUE: 04-12-18

29/116 Coonawarra Road  
Winnellie NT 0820  
Box 3499 Darwin NT 0810  
P: 08 8947 2437

### LEGEND



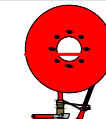
EXIT SIGN



DESIGNATED  
EXIT



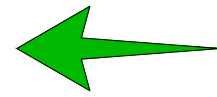
DRY CHEMICAL POWDER  
FIRE EXTINGUISHER



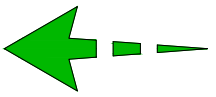
FIRE  
HOSE REEL



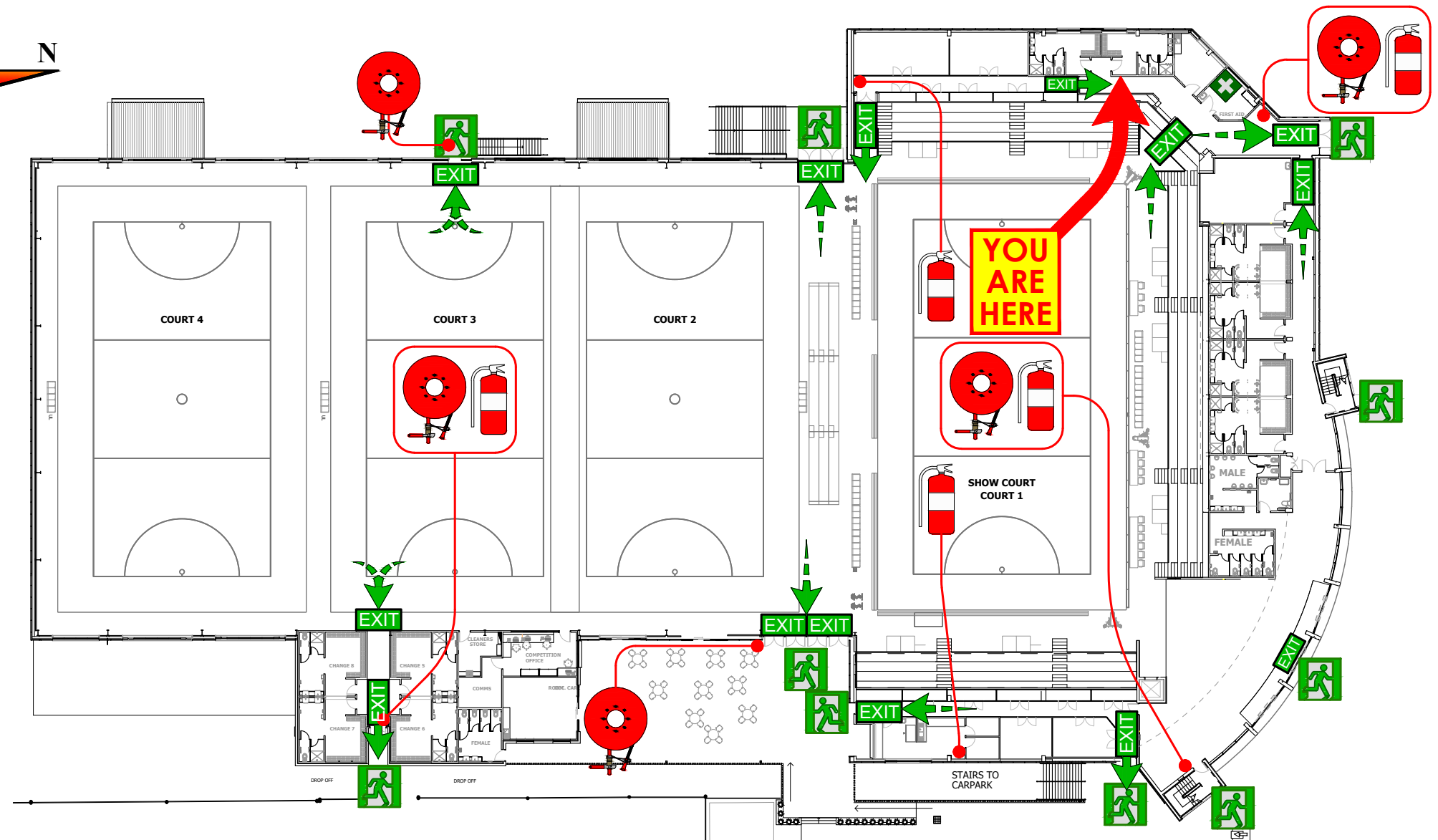
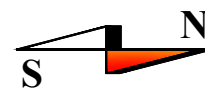
FIRST AID  
KIT



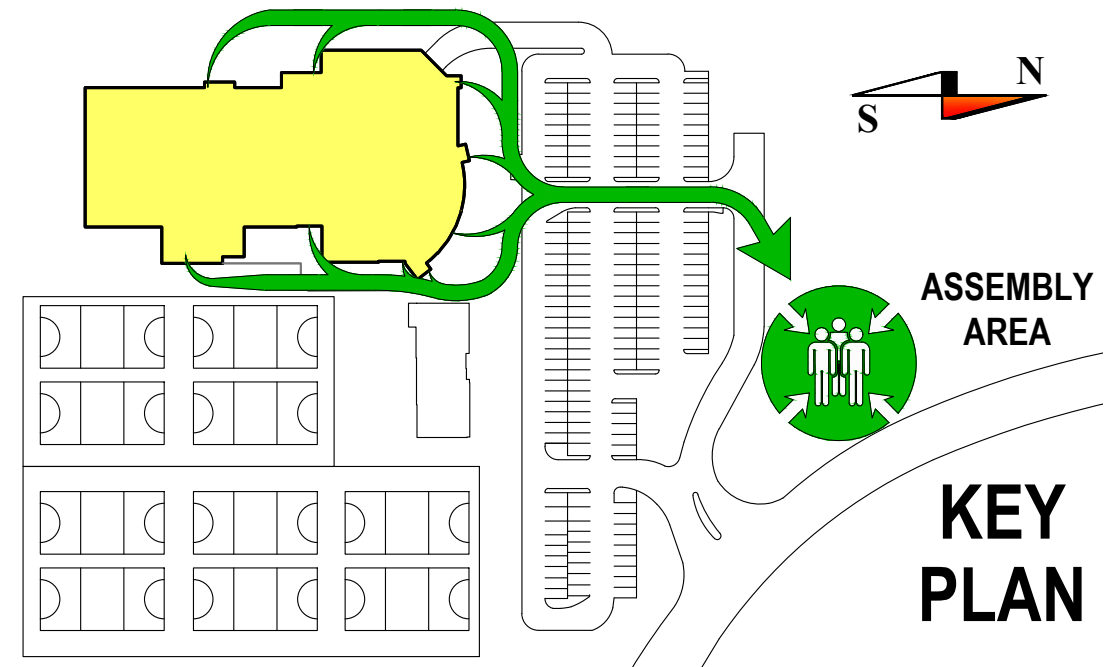
EGRESS PATH  
EXTERNAL



EGRESS PATH  
INTERNAL



GROUND FLOOR



ASSEMBLY  
AREA

KEY  
PLAN



# EVACUATION DIAGRAM

## NT NETBALL

235 ABALA ROAD  
DARWIN, 0812 NORTHERN TERRITORY

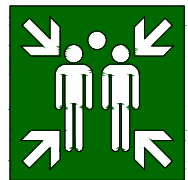
### EMERGENCY PROCEDURES



OPERATE THE NEAREST FIRE ALARM  
IF APPLICABLE & WARN OTHER  
OCCUPANTS.



LEAVE THE BUILDING BY THE  
NEAREST AND SAFEST AVAILABLE  
EXIT & PATH OF EGRESS. DO NOT  
RUN.



REPORT TO THE FIRE WARDENS  
IN CHARGE OF THE ASSEMBLY  
POINT AND FOLLOW INSTRUCTIONS



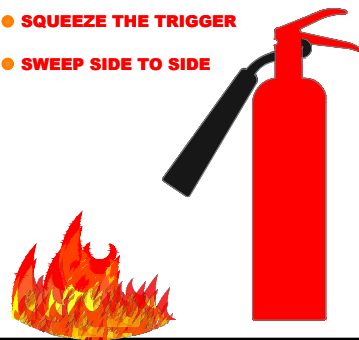
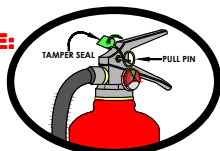
DO NOT RE-ENTER THE BUILDING  
UNTIL AUTHORIZED TO DO SO BY  
THE FIRE WARDENS



### FIRE EXTINGUISHER

#### HOW TO USE:

- IF TRAINED TO DO SO
- PULL THE PIN
- AIM AT THE BASE OF THE FIRE
- SQUEEZE THE TRIGGER
- SWEEP SIDE TO SIDE



DATE OF ISSUE: 04-12-18

29/116 Coonawarra Road  
Winnellie NT 0820  
Box 3499 Darwin NT 0810  
P: 08 8947 2437

### LEGEND



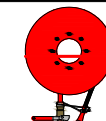
EXIT SIGN



DESIGNATED  
EXIT



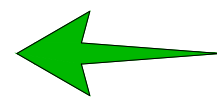
DRY CHEMICAL POWDER  
FIRE EXTINGUISHER



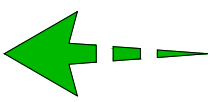
FIRE  
HOSE REEL



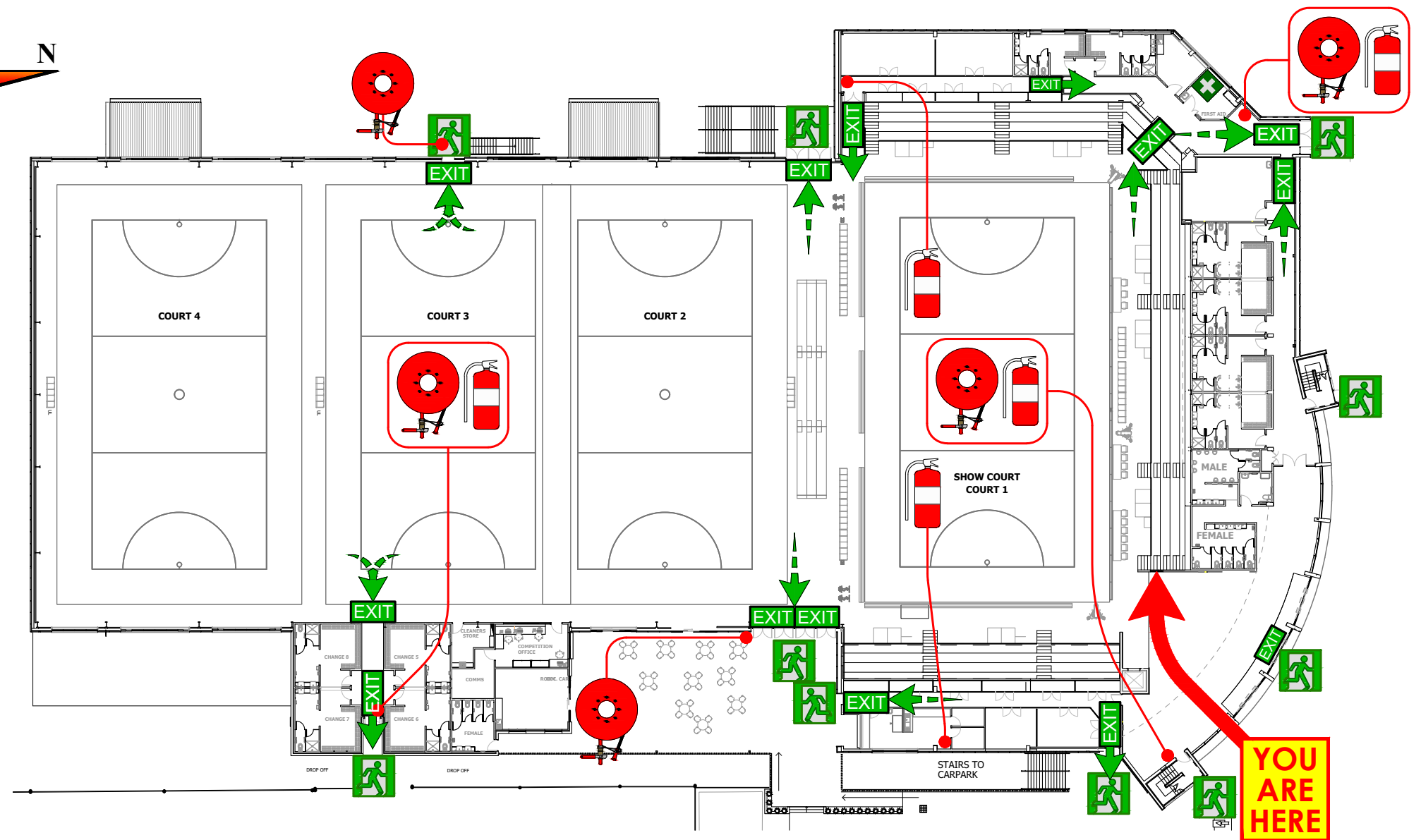
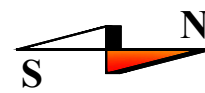
FIRST AID  
KIT



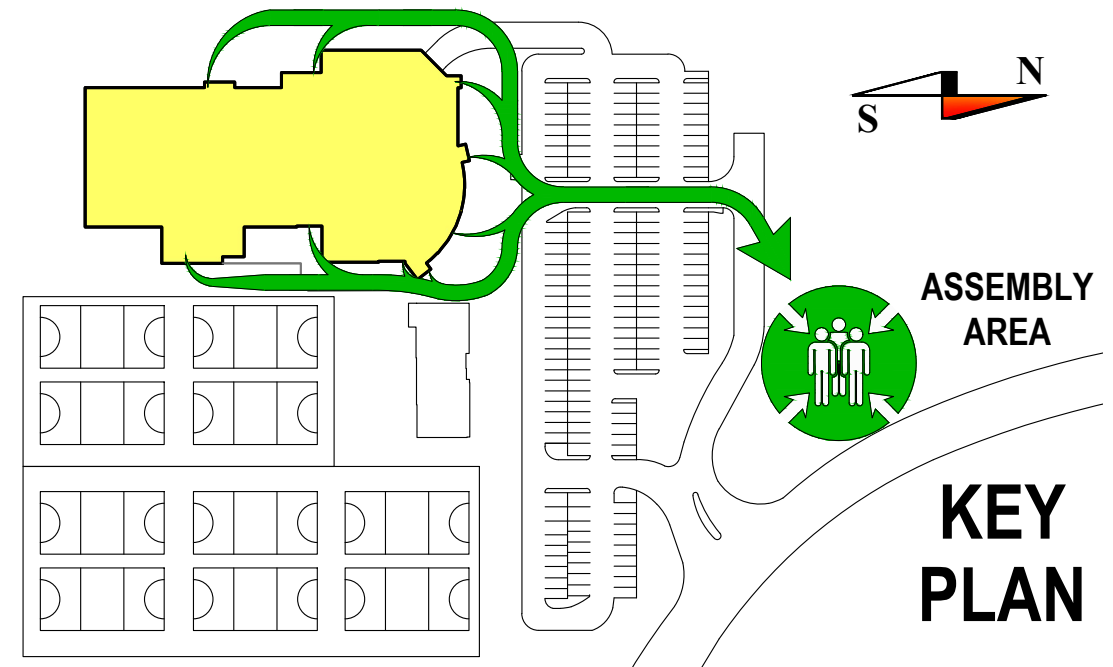
EGRESS PATH  
EXTERNAL



EGRESS PATH  
INTERNAL



GROUND FLOOR



ASSEMBLY  
AREA

KEY  
PLAN



# EVACUATION DIAGRAM

## NT NETBALL

235 ABALA ROAD  
DARWIN, 0812 NORTHERN TERRITORY

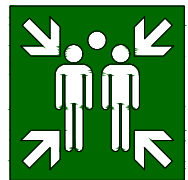
### EMERGENCY PROCEDURES



OPERATE THE NEAREST FIRE ALARM  
IF APPLICABLE & WARN OTHER  
OCCUPANTS.



LEAVE THE BUILDING BY THE  
NEAREST AND SAFEST AVAILABLE  
EXIT & PATH OF EGRESS. DO NOT  
RUN.



REPORT TO THE FIRE WARDENS  
IN CHARGE OF THE ASSEMBLY  
POINT AND FOLLOW INSTRUCTIONS



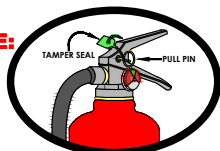
DO NOT RE-ENTER THE BUILDING  
UNTIL AUTHORIZED TO DO SO BY  
THE FIRE WARDENS



### FIRE EXTINGUISHER

#### HOW TO USE:

- IF TRAINED TO DO SO
- PULL THE PIN
- AIM AT THE BASE OF THE FIRE
- SQUEEZE THE TRIGGER
- SWEEP SIDE TO SIDE



DATE OF ISSUE: 04-12-18

29/116 Coonawarra Road  
Winnellie NT 0820  
Box 3499 Darwin NT 0810  
P: 08 8947 2437

### LEGEND



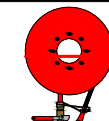
EXIT SIGN



DESIGNATED  
EXIT



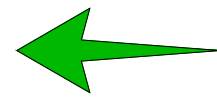
DRY CHEMICAL POWDER  
FIRE EXTINGUISHER



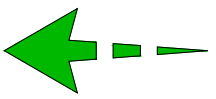
FIRE  
HOSE REEL



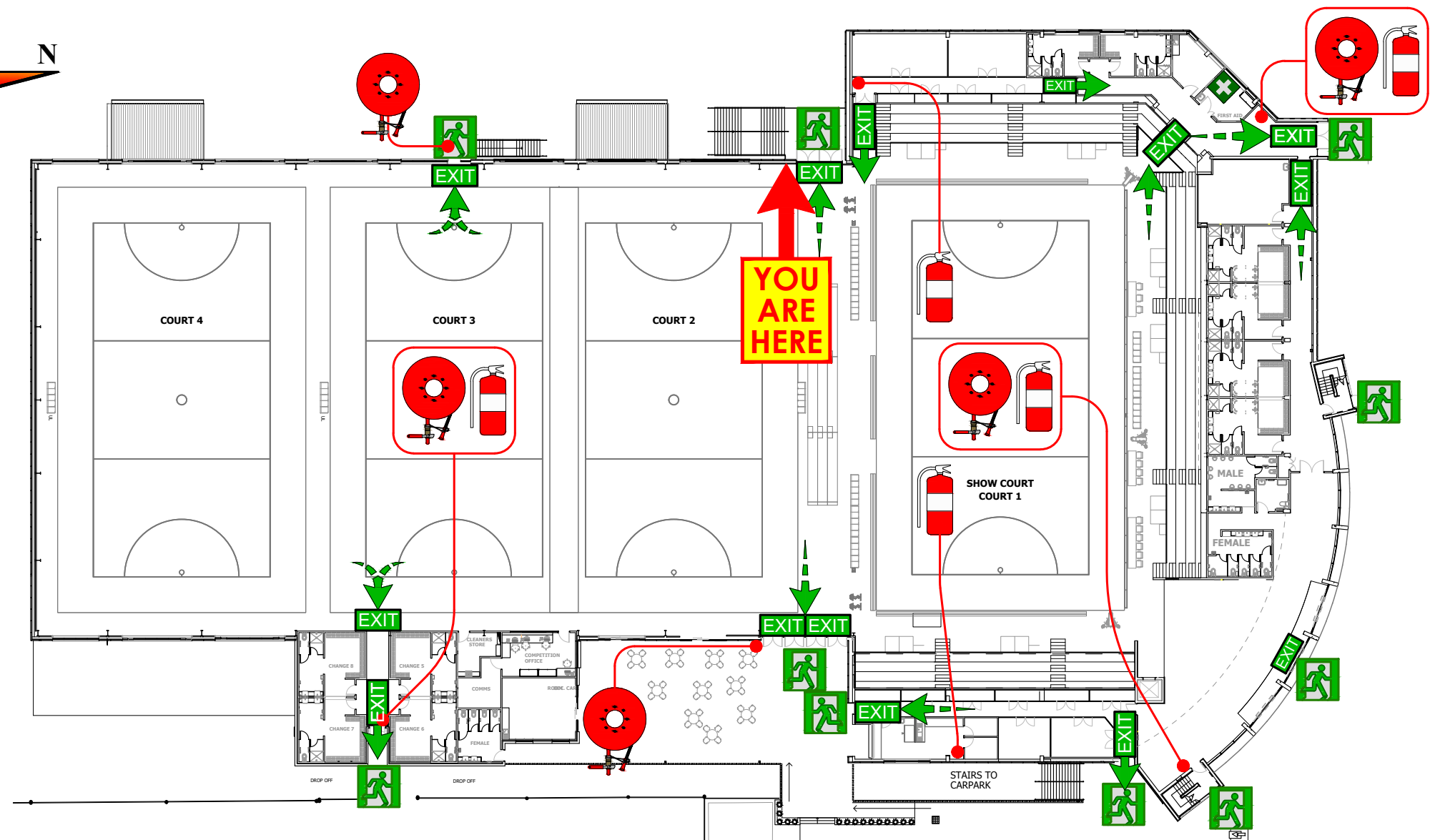
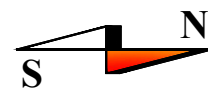
FIRST AID  
KIT



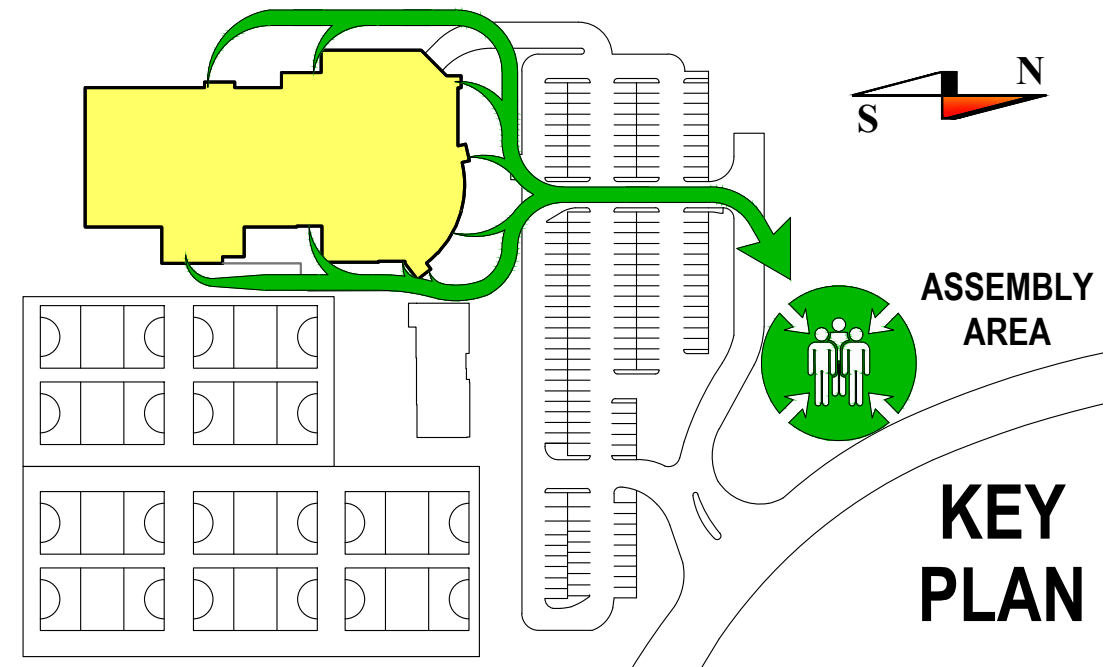
EGRESS PATH  
EXTERNAL



EGRESS PATH  
INTERNAL



GROUND FLOOR



ASSEMBLY  
AREA

KEY  
PLAN





# EVACUATION DIAGRAM

## NT NETBALL

235 ABALA ROAD  
DARWIN, 0812 NORTHERN TERRITORY

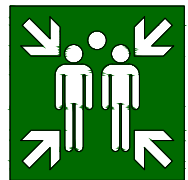
### EMERGENCY PROCEDURES



OPERATE THE NEAREST FIRE ALARM  
IF APPLICABLE & WARN OTHER  
OCCUPANTS.



LEAVE THE BUILDING BY THE  
NEAREST AND SAFEST AVAILABLE  
EXIT & PATH OF EGRESS. DO NOT  
RUN.



REPORT TO THE FIRE WARDENS  
IN CHARGE OF THE ASSEMBLY  
POINT AND FOLLOW INSTRUCTIONS



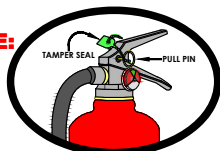
DO NOT RE-ENTER THE BUILDING  
UNTIL AUTHORIZED TO DO SO BY  
THE FIRE WARDENS



### FIRE EXTINGUISHER

#### HOW TO USE:

- IF TRAINED TO DO SO
- PULL THE PIN
- AIM AT THE BASE OF THE FIRE
- SQUEEZE THE TRIGGER
- SWEEP SIDE TO SIDE



DATE OF ISSUE: 04-12-18

29/116 Coonawarra Road  
Winnellie NT 0820  
Box 3499 Darwin NT 0810  
P: 08 8947 2437

### LEGEND



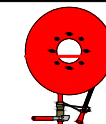
EXIT SIGN



DESIGNATED  
EXIT



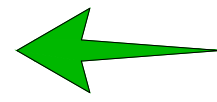
DRY CHEMICAL POWDER  
FIRE EXTINGUISHER



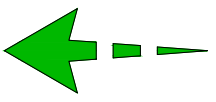
FIRE  
HOSE REEL



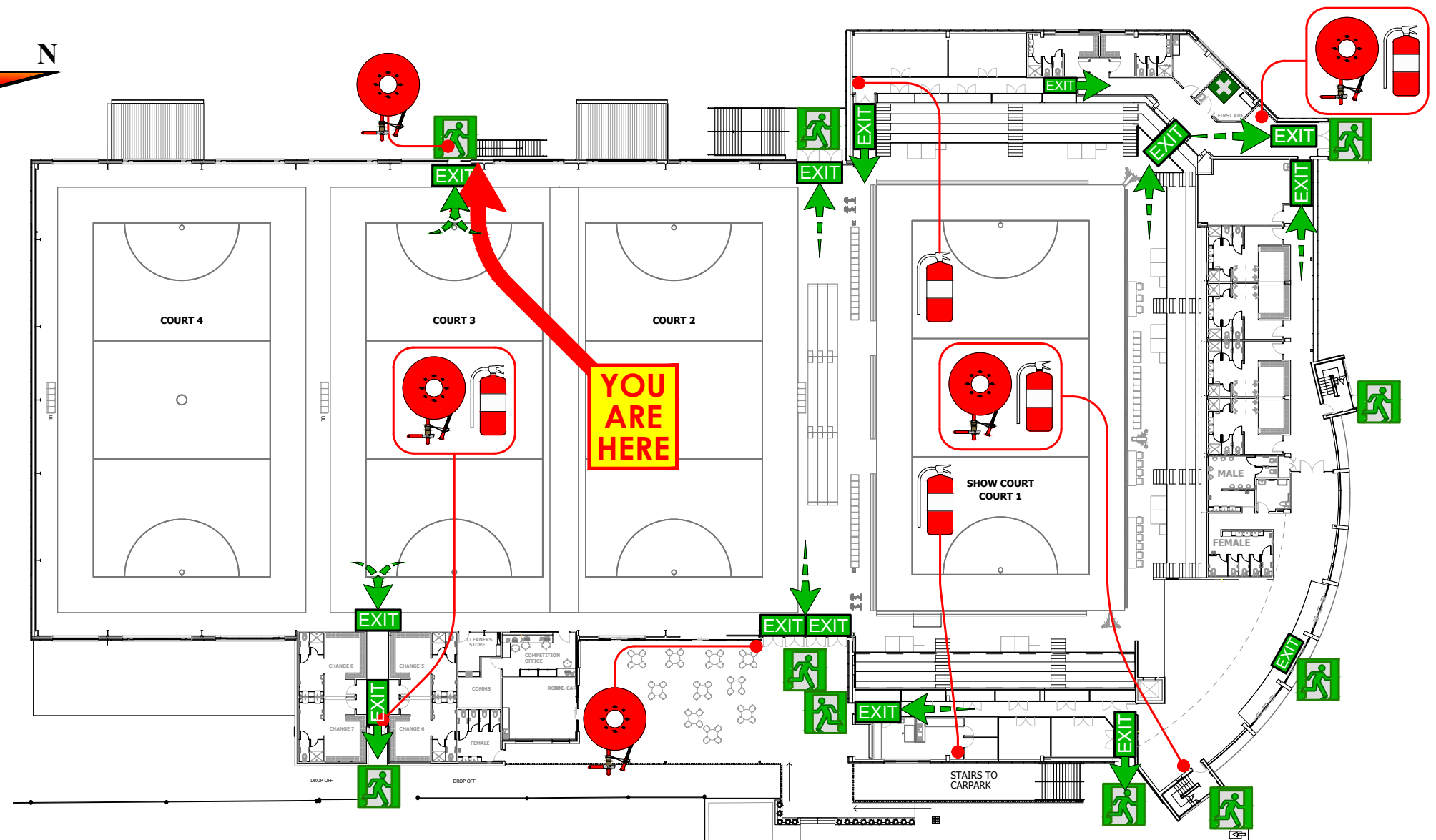
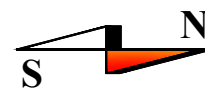
FIRST AID  
KIT



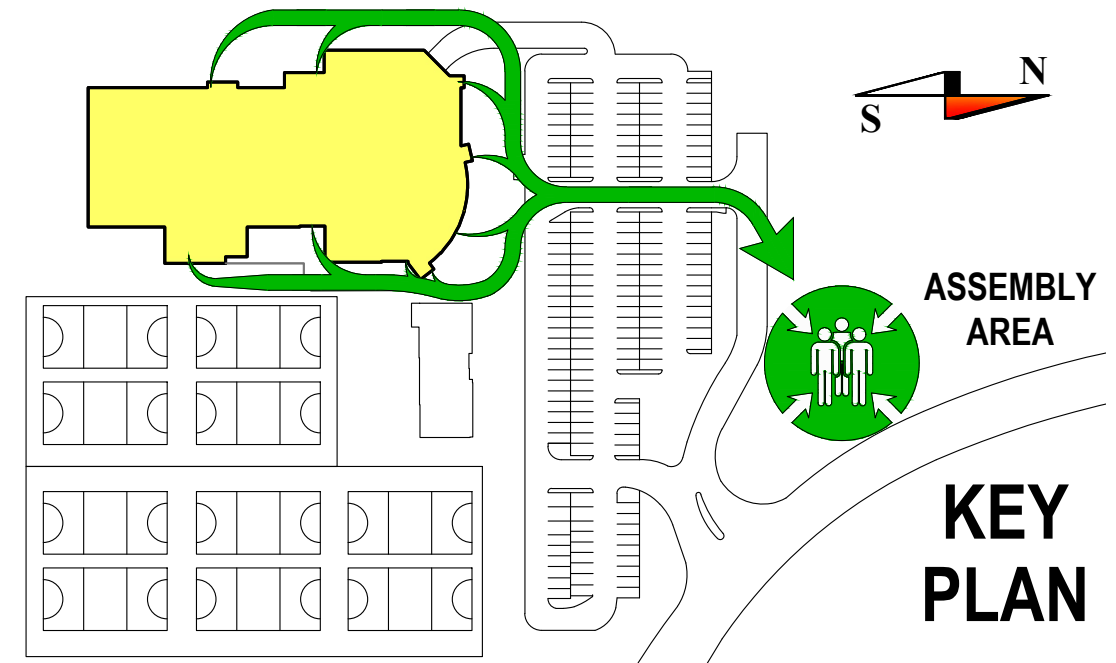
EGRESS PATH  
EXTERNAL



EGRESS PATH  
INTERNAL



GROUND FLOOR



# EVACUATION DIAGRAM

## NT NETBALL

235 ABALA ROAD  
DARWIN, 0812 NORTHERN TERRITORY

### EMERGENCY PROCEDURES



OPERATE THE NEAREST FIRE ALARM  
IF APPLICABLE & WARN OTHER  
OCCUPANTS.



LEAVE THE BUILDING BY THE  
NEAREST AND SAFEST AVAILABLE  
EXIT & PATH OF EGRESS. DO NOT  
RUN.



REPORT TO THE FIRE WARDENS  
IN CHARGE OF THE ASSEMBLY  
POINT AND FOLLOW INSTRUCTIONS



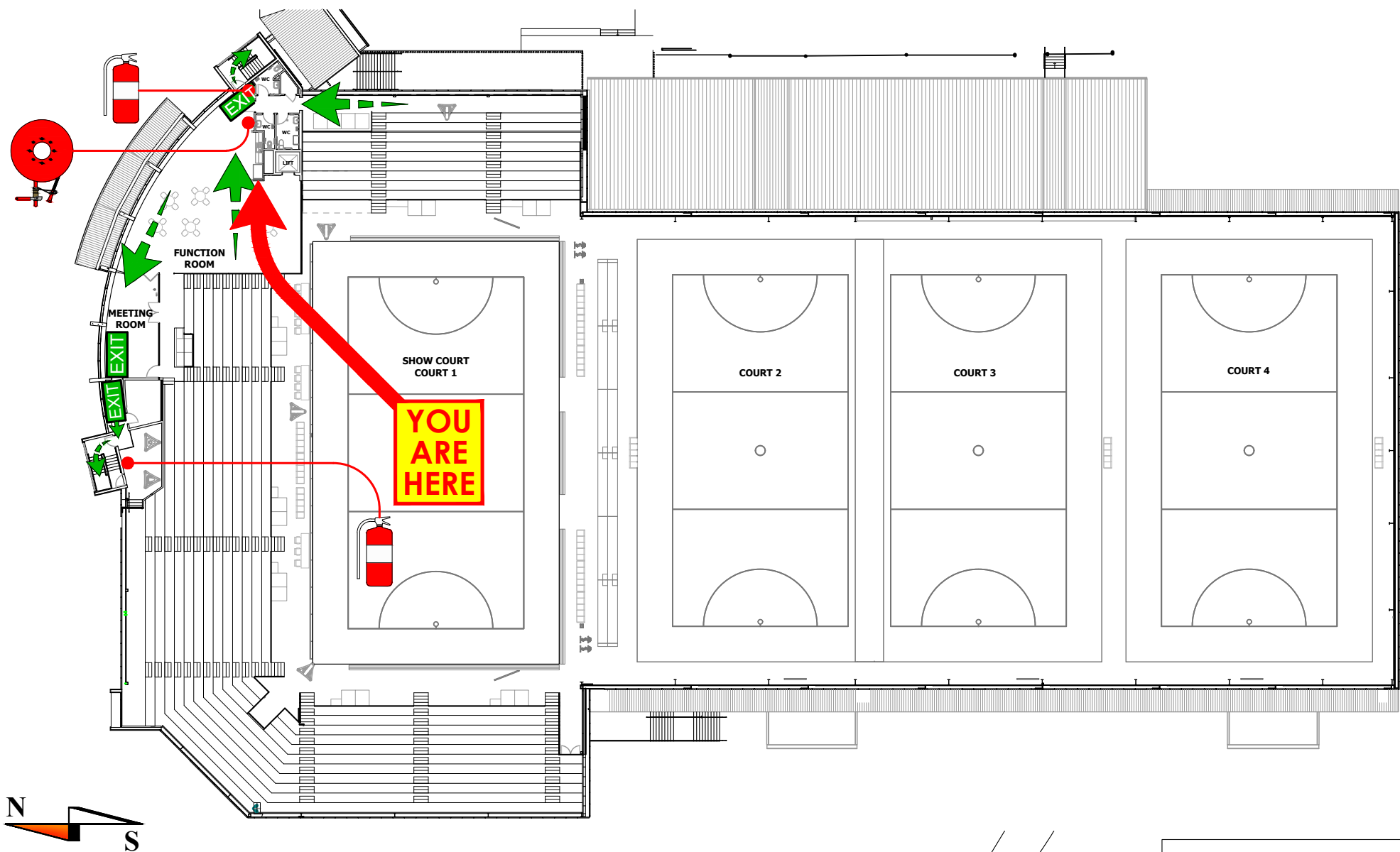
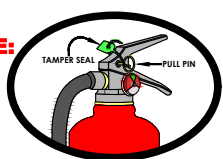
DO NOT RE-ENTER THE BUILDING  
UNTIL AUTHORIZED TO DO SO BY  
THE FIRE WARDENS



### FIRE EXTINGUISHER

#### HOW TO USE:

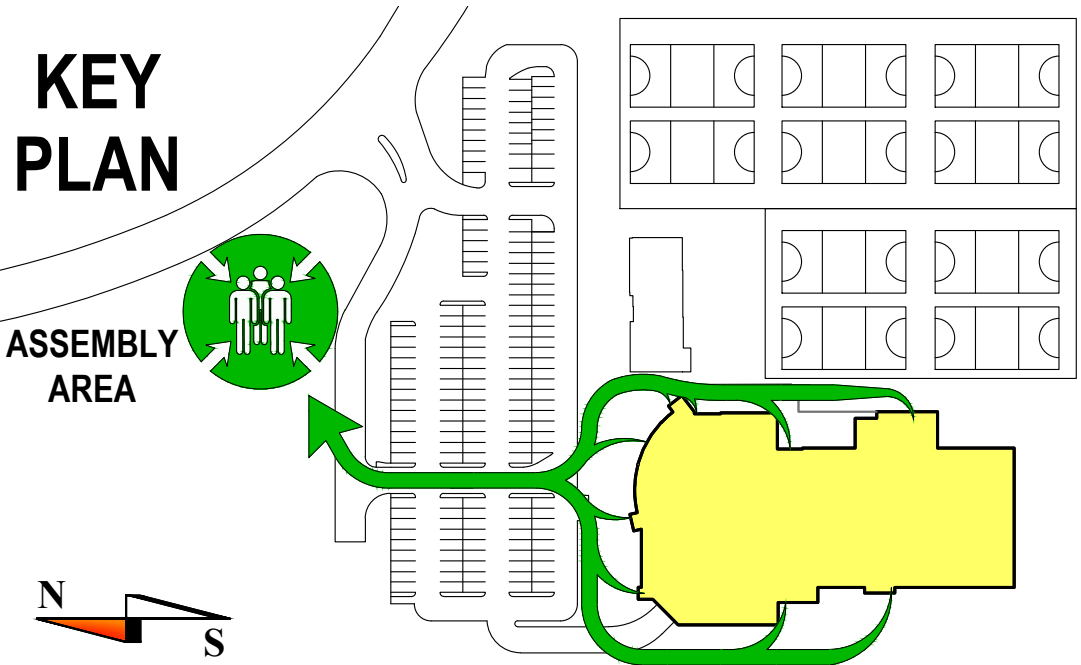
- IF TRAINED TO DO SO
- PULL THE PIN
- AIM AT THE BASE OF THE FIRE
- SQUEEZE THE TRIGGER
- SWEEP SIDE TO SIDE



MEZZANINE FLOOR

### KEY PLAN

ASSEMBLY  
AREA



DATE OF ISSUE: 04-12-18



29/116 Coonawarra Road  
Winnellie NT 0820  
Box 3499 Darwin NT 0810  
P: 08 8947 2437

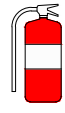
### LEGEND



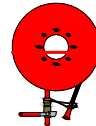
EXIT SIGN



DESIGNATED  
EXIT



DRY CHEMICAL POWDER  
FIRE EXTINGUISHER



FIRE  
HOSE REEL



FIRST AID  
KIT



EGRESS PATH  
EXTERNAL



EGRESS PATH  
INTERNAL

**EVACUATION DIAGRAM**  
**NT NETBALL**  
235 ABALA ROAD  
DARWIN, 0812 NORTHERN TERRITORY

**EMERGENCY PROCEDURES**



**OPERATE THE NEAREST FIRE ALARM**  
IF APPLICABLE & WARN OTHER  
OCCUPANTS.



**LEAVE THE BUILDING BY THE**  
NEAREST AND SAFEST AVAILABLE  
EXIT & PATH OF EGRESS. DO NOT  
RUN.



**REPORT TO THE FIRE WARDENS**  
IN CHARGE OF THE ASSEMBLY  
POINT AND FOLLOW INSTRUCTIONS



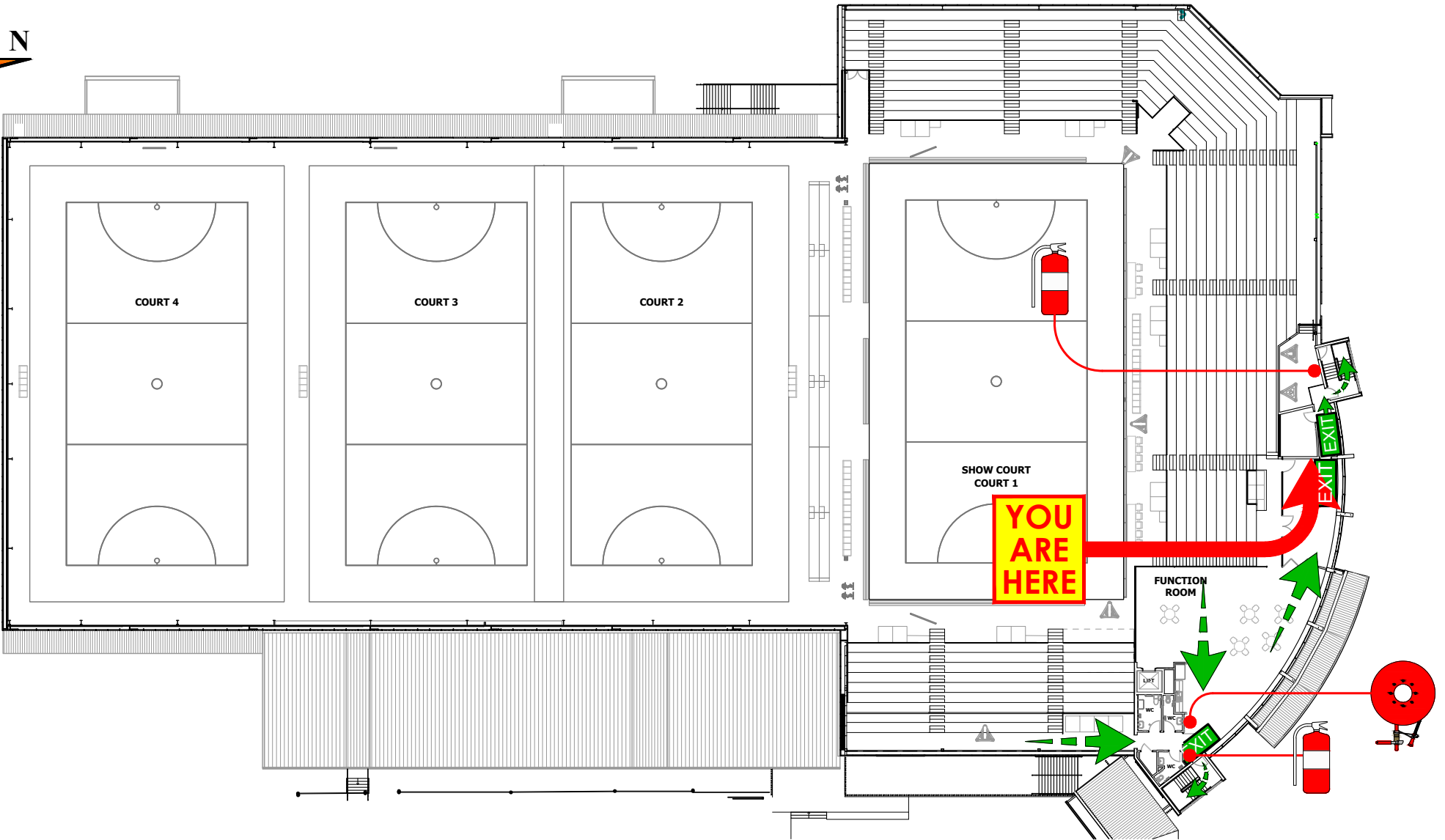
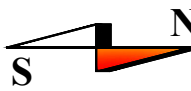
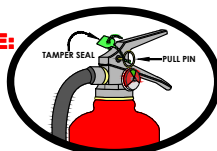
**DO NOT RE-ENTER THE BUILDING**  
UNTIL AUTHORIZED TO DO SO BY  
THE FIRE WARDENS



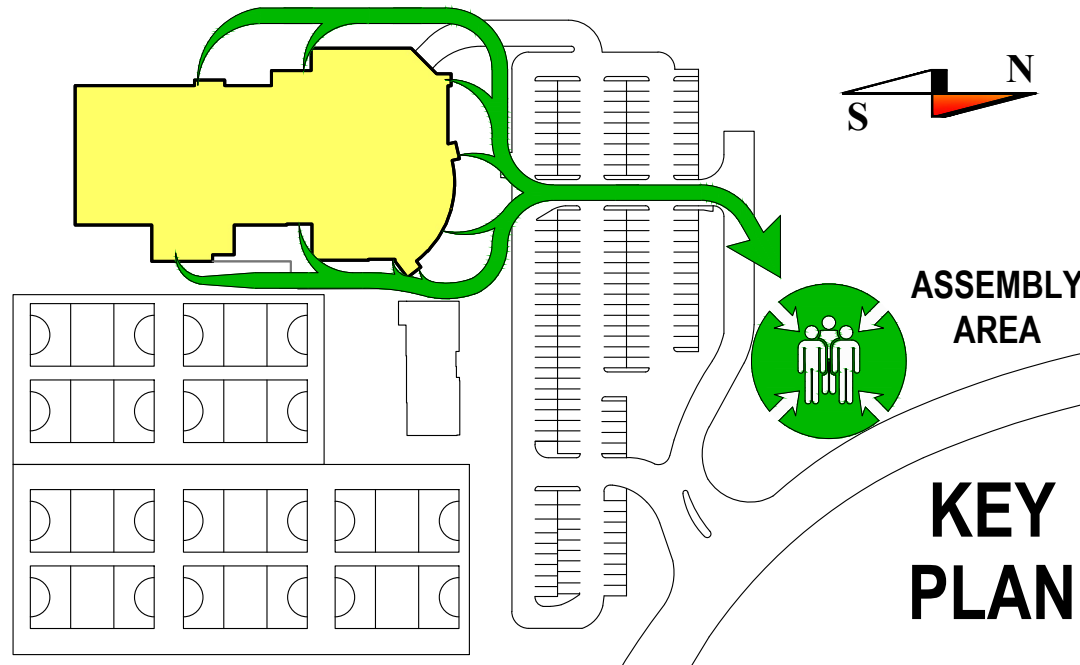
**FIRE EXTINGUISHER**

**HOW TO USE:**

- IF TRAINED TO DO SO
- PULL THE PIN
- AIM AT THE BASE OF THE FIRE
- SQUEEZE THE TRIGGER
- SWEEP SIDE TO SIDE



**MEZZANINE FLOOR**



**ASSEMBLY AREA**

**KEY PLAN**

DATE OF ISSUE: 04-12-18



29/116 Coonawarra Road  
Winnellie NT 0820  
Box 3499 Darwin NT 0810  
P: 08 8947 2437

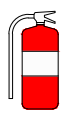
**LEGEND**



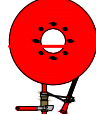
EXIT SIGN



DESIGNATED  
EXIT



DRY CHEMICAL POWDER  
FIRE EXTINGUISHER



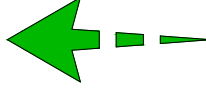
FIRE  
HOSE REEL



FIRST AID  
KIT



EGRESS PATH  
EXTERNAL



EGRESS PATH  
INTERNAL